



Dreaming

With

The World

**2018 FISM BUSAN, KOREA**

6<sup>th</sup> July ~ 11<sup>th</sup> July



Busan International Magic Festival



# *Leader's Choice, BUSAN!*

FISM2018 will gather people from all around the world to become one.

FISM 2018, is the feast of magicians. Preparing for the best FISM ever, Busan, the best MICE city, is here for you. Based on the various excursions, convenient transportation, best performance facilities, affordable prices, the country's support, we promise you it will be the best. Here, we introduce you the right place for FISM2018, Busan.





# A Perfect Place

*For your convention*

Busan has the best conditions for the FISM 2018 WCM: The world's best tourism infrastructure, representative city of MICE industry, convenient transportation, etc. You can enjoy a lot at a low price because of the support of the central government and global companies.



## *The Whole World Together*

We had a dream and realized BIMF, not alone but together with the 4million citizens of Busan. Busan will be the core of BIMF, the festival of everyone around the world as well as the magicians.



# About BIMF...

Since we have celebrated BIMF annually (this year is the 10<sup>th</sup> anniversary), we will offer you the best FISM thanks to the skills and know-how we acquired organizing this festival. We have produced lots of globally recognized magicians: Yu Ho-jin, An Ha-rim, Han Seol-hui, Ha Won-geun, etc. Also famous world-class magicians such as Michael Ammar, Topas, Shawn Farquhar, Ton Onosaka, etc have participated in the event. BIMF has earned an excellent international reputation internationally by having presidents of the world magic organizations as judges. The best magic festival in Asia, the BIMF will lead to the best FISM here in Busan.

## BIMF posters in the past

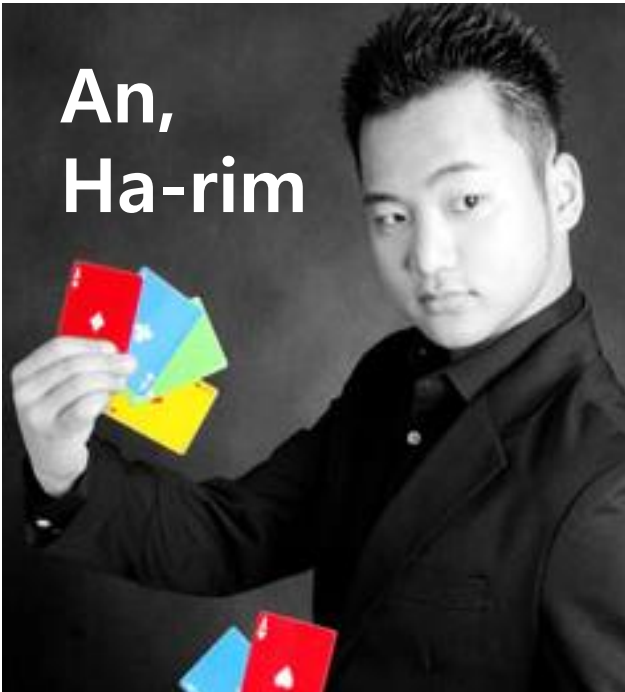




# Magicians

*Winner of BIMF Competition*

---



**An,  
Ha-rim**

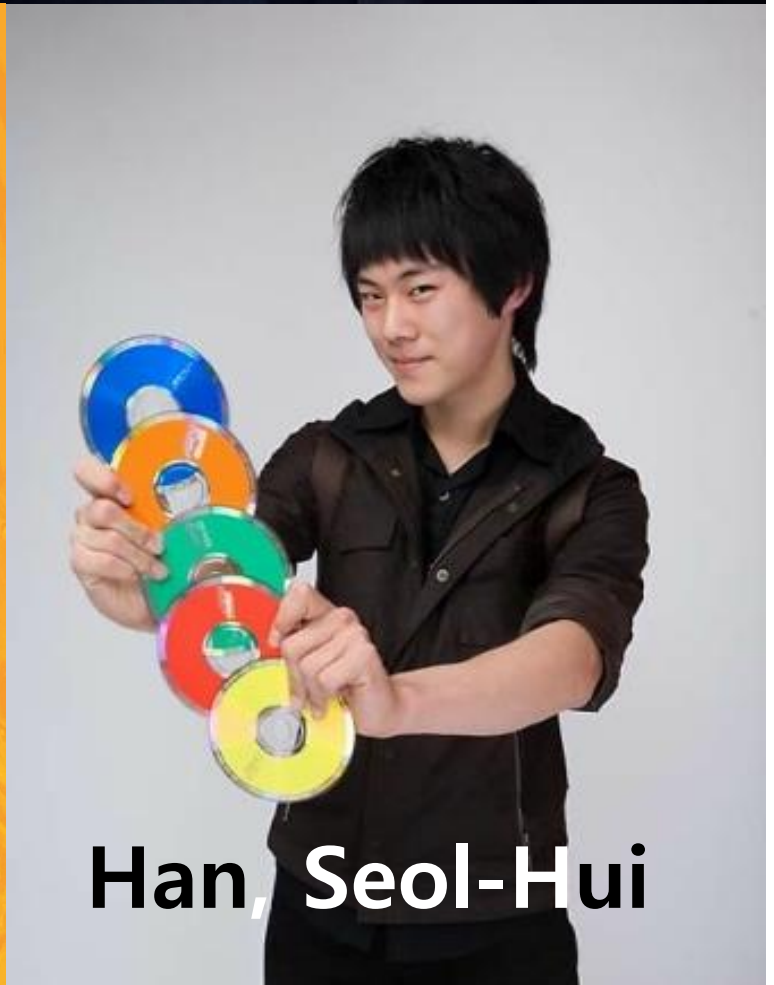


**Lukas**



**ted kim**  
**White Art Performer**

**Ted Kim**



**Han, Seol-Hui**



# Magicians

*Winner of BIMF Competition*



**Zeki You**



**Yu, Ho-jin**

*Yu Ho Jin*



**Kim,  
Hyun-jun**



**Ha,  
Won-geun**



# Previous Guest Magicians

*The Best Magicians In The World*

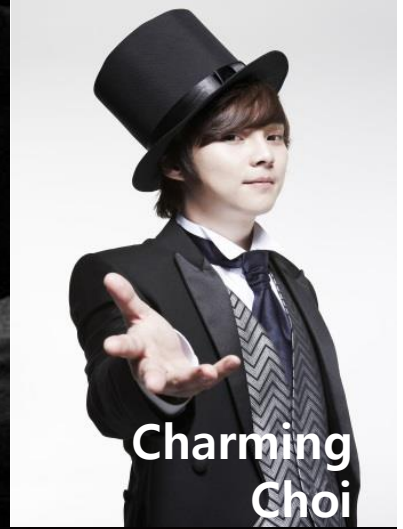
---



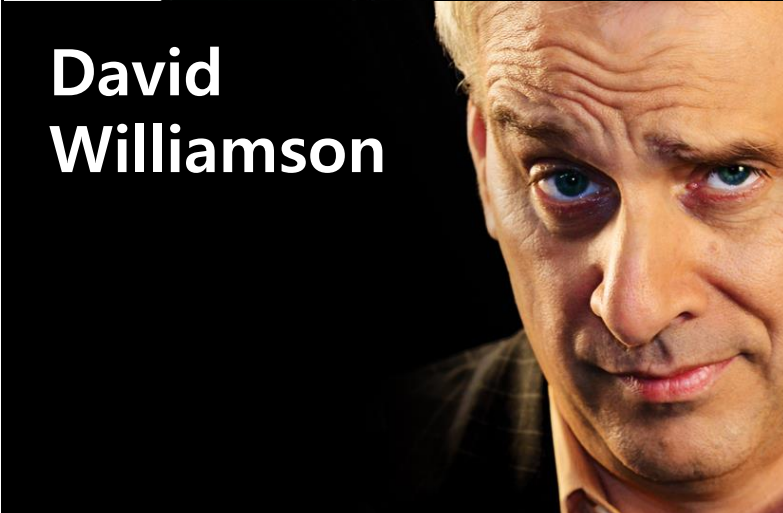
**TOPAS**



**Michael  
Ammar**



**Charming  
Choi**



**David  
Williamson**



**Haruo  
Shimada**



**Kenji  
Minemura**

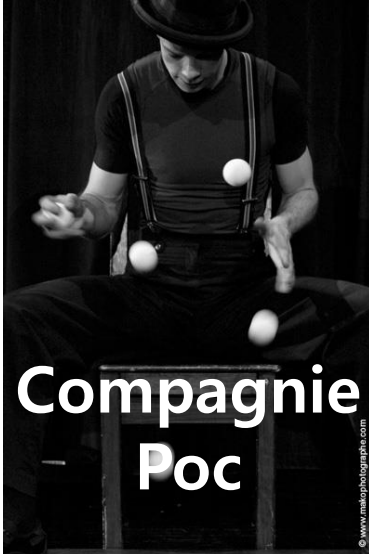


# Previous Guest Magicians

*The Best Magicians In The World*



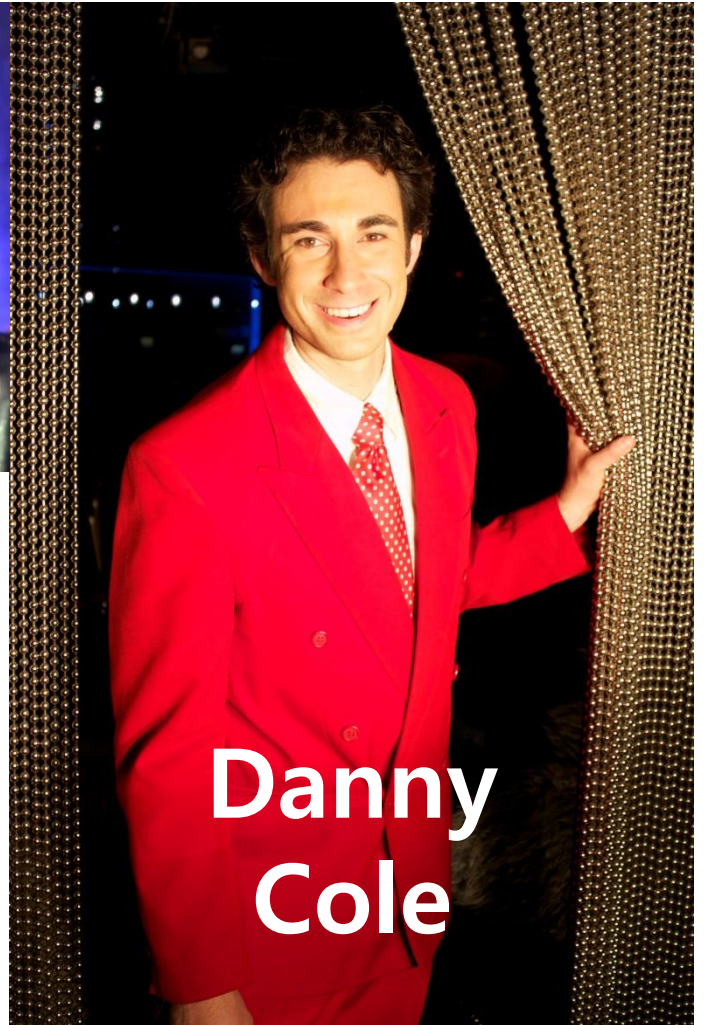
**Henry  
Evans**



**Compagnie  
Poc**



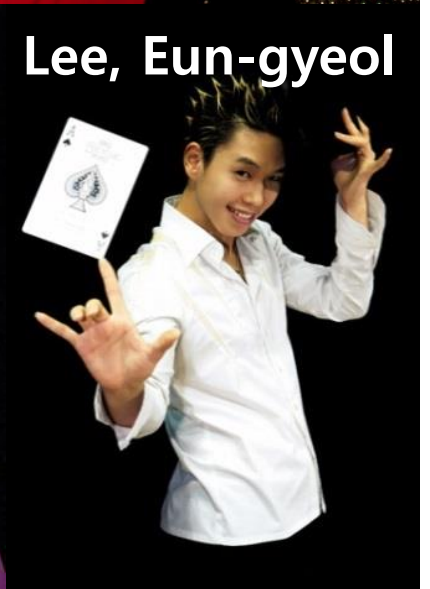
**Tony  
Chapec**



**Danny  
Cole**



**Shawn  
Farquhar**



**Lee, Eun-gyeol**

Organization

---



# Cooperation Organization

## Wholehearted Country Support



### Busan (municipality)

responsible for the overall operations.  
(autonomous region)  
Will support international events,  
conferences, etc. running in Busan.  
Produces various cultural events as a  
marine city of Northeast Asia.



### Ministry of Culture, Sports and Tourism (state agencies)

– supports and attracts  
international, national events,  
developing unique traditions,  
accepting foreign culture under  
the motive of fusion and diffusion.



KOREA TOURISM ORGANIZATION  
[www.visitkorea.or.kr](http://www.visitkorea.or.kr)

### Korea Tourism Organization

– Is an institute giving the necessary  
support to attract a wide variety of  
international events giving information in  
Korea and abroad



### Haeundae-gu (local government)

– As an autonomous province of Busan,  
it is a centre of the MICE industry with its  
leisure and sports, accommodation, etc. It  
supports culture and tourism, festivals  
and events



### Busan Tourism Organization

– Actively supports MICE industry  
along with various international events  
to make Korea a luxurious tourist  
destination in all four seasons.

# Global Partner

By having corporate sponsorship, we will have financial supports, and nationwide publicity.



HYUNDAI

POSCO



# Local Partner



By the collaboration with local businesses, the best magic festival will be held in Busan.



## A Letter of Endorsement for the 2018 FISM World Championship of Magic



Busan, as one of Korea's leading cities of culture and tourism, has been contributing to the development of the magic industry and nurturing talent in this field by hosting the Busan International Magic Festival (BIMF) since 2006. Based on the success of the BIMF, the best and largest magic festival in Asia, I wholeheartedly endorse efforts to bring the 2018 FISM World Championship of Magic to Busan.

**Seo, byung soo**  
Mayor of Busan Metropolitan City

## Greetings

Hello Magical friends in the world.



We truly wish to host the 2018 FISM BUSAN WCM. We strongly hope that we can meet our friends from around the world in Busan. Dreams come true to those who never give up and give it their all. We ask for your encouragement and participation so that our dreams come true. Thank you.

**Ha, tae gyung**

Committee Member of the National Assembly



## A Letter from The President of BIMF



Since the Korean War of the mid-twentieth century Korea has been divided into two; North and South. It is because of this that our political, cultural and other ties have been separated. Over the years there have been attempts to improve the relations between the two Koreas in order to bring about peace and harmony, especially through cultural functions. It is our hope that through organizing the 2018 FISM BUSAN we can improve the relationship between North and South Korea. We truly believe that by having an Opening Ceremony, which features magicians from both North and South Korea, we can demonstrate what magic and art can do for Peace. Over the past nine years the annual Busan International Magic Festival has played host to thousands of magicians and hundreds of thousands members of the public, in order to educate and showcase the art of magic. It has always been successful and received the support of the city of Busan, the Korean Ministry of Culture and Tourism, and the numerous Korean Media outlets, all of whose support we will have with our bid to bring FISM here. At present we are working on being able to provide discounts from 18 ~ 40% for those coming to participate in FISM from far away countries. We are also in talks to try to reduce the hotel rates up to 35% and to work deals with Asiana Airlines, Korean Air and tour groups to make available additional ways to reduce the costs for those coming from afar. For these reasons and many more we hope to be successful in having the honor of hosting the 2018 FISM here in Busan.

Kang Yeol-Woo  
The President of BIMF

A handwritten signature in black ink, appearing to read 'Kang Yeol-Woo', written in a cursive style.

## Greetings



Welcome to Busan Korea!

We truly wish to host the 2018 FISM BUSAN WCM! The unique spirit of our people—our Korean Heung—will serve to introduce the world to a surprising culture of friendship, celebration, warmth and hospitality largely unknown to many around the world, and a new, compact and efficient FISM WCM 2018 plan, featuring the most accessible, world-class venues ever for a FISM WCM.

Thank you!

AN WON CHUL   
The President of Busan Arts College



# Hosting Organization

*BIMF Magic Club*



Nation	South Korea
City	Busan metropolitan city
President	Kang, yeol-woo
Address	3508 Busan art collage 74 ,Motgolbeonyeong-ro 71 <sup>St</sup> Nam-gu Busan, Korea
Telephone	+82 51-626-7002
Website	<a href="http://www.hibimf.org">www.hibimf.org</a>
E-mail	<a href="mailto:BIMF7002@gmail.com">BIMF7002@gmail.com</a>
Activity	<p>It is the largest magic festival in Asia. This festival is held annually from the first Wednesday to Sunday in August, for 5 days, and 2015 will be the 10th year of the festival. Every year, about 1,000 magicians participate in the festival, 5,000 visitors come to watch the outdoor opening ceremony and more than 15,000 come and watch the gala shows. The festival has more than 30 programs including an international magic contest, special magic shows integrating other art forms and many more activities to enjoy. More than 150 volunteers work together to help with interpretation, protocol and event fields along with more than 30 experts in order to create a successful festival.</p>

# PCO

*Professional Convention Organizer*

---



Company	CODE Nine, Busan, Korea
Company Established	January, 1999
Representative	Lee, eun-joo
Address	Baeksong O/T 5F, #1777-4, Jung-dong, Haeundae-gu, Busan, Korea
Telephone	+82 51-743-1880
E-mail	<a href="mailto:Codenin@naver.com">Codenin@naver.com</a>
Activity	Red bull F1 Show run Ballantine's 40YO Launching Ceremony 2008 Busan International Motor show 2009 G-star Blizzard Exhibition



Working Team

---

**BIMF Organizing  
committee**

**Organizing Committee Chairman**  
Mayor of Busan – Seo, Byeong soo

**Organizing Committee Chairman**  
National Assembly – Hah, Tae kyung

**BIMF Executive  
Committee**

**Organizing Committee**

Gu, Jung-hoei (Eunsung medical  
foundation chairman)  
Oh, Sung-geun (BEXCO Chairman)  
Boo, Goo-wook (General of  
Youngsan University)  
An, Won-Chol (General of Busan  
Art College)  
Ryu, Kyoung-hwa (General of  
Dong-Busan college)

**President**

Busan Art College  
Professor Kang, Yeol-woo

**Vice president**

Haeundae-gu  
Jung, Sung-cheol

**Art director**

Korea Cultural Contents  
Institute  
Head Hwang, Hae-soon

**Technical advisor**

Culture Engineering  
Representation  
Kim, Kyoung-geun

**Executive Committee**

Kang, Yeol-woo (Professor of  
Busan Art College)  
Jung, Sung-cheol (Haeundae-gu)  
Kim, Cheol-woo (Professor of  
Youngsan University)  
Kim, Han-joo (Professor of Sinra  
University)  
An, Young-soo (Professor of Busan  
Art College)  
Yoon, Cheol-sun (Tax Accountants)  
Gregory Bracco (Headquarter of  
IBM Korea )

**BIMF 사무국**

Tel : +82 51-626-7002  
Fax : +82 51-627-2397

**Secretary General**  
Professor of Youngsan  
University  
Park, Jae-sung

**Executive team leader**  
Ace Magic  
Kim, Chan-joo

**Programmer**  
Jej-Min

**Promotion team**  
Manager  
Son, Eun-ji

**Planning team**  
Manager  
Lee, Jun-myeong

**Volunteer team**  
Manager  
Park, Jung-hae

Official web site : [www.hibimf.org](http://www.hibimf.org)

Official Facebook : [www.facebook.com/hibimf7002](http://www.facebook.com/hibimf7002)



# Volunteers



The 2018 FISM already established a support structure of over 1,000 volunteers to help with general inquiries from FISM participants and act as personal interpreters and escorts for the guest performers and VIP's.



Basic information, pamphlets, leaflets, FISM daily news will all be published in Korean and FISM languages(German, French, English, Spanish). Chinese and Japanese will be supported as well. Moreover, more than 150 interpreters who can speak the FISM languages, Chinese and Japanese will be stationed throughout the convention hall.

# Volunteers



## VIP Escort

Every VIP will be escorted and assisted by a trained interpreter and their transportation to the official schedules will be supported. This is the same support offered to the guest performers and judges during the Busan International Magic Festival every year.

## Artist Escort

All guest performers and judges will be escorted and assisted by a trained interpreter and their transportation to the official schedule will be supported. Also, the interpreter will be in charge of the guest's schedules and so on. This is the same support offered to the guest performers and judges during the Busan International Magic Festival every year.

## Lectures

The same lecture will be given 3 times during the event, and each time they will be interpreted into different languages. The schedule for the interpretation will be announced in advance in order to make it possible for the participants to follow the lecture in the language they are most familiar with.

## Announcements

The announcements and GALA shows are planned to be in English, but subtitles will be used for other languages. However, prior preparation with the MC to incorporate more expression, motion, and body language rather than language itself is necessary.



# Volunteers



## Volunteers System(VIP)

Every VIP, judge, and guest performer will be escorted and assisted by a trained interpreter and their transportation to the official schedule will be supported.

## Volunteer System (Participants)

More than 150 volunteers will stay in the venue for venue inquiries, introductions, interpretation services, and management of complaints, etc.

Program

---



# Special

*Varied Programs  
& Special Pass Card*



## Collaboration

Programs such as collaborations with various artists will be attempted to pioneer the new area of art. (magicians, pantomime performers, painters, composers, actors, percussionists and so on)

## All in one card

It is an item that has a function of participant registration, specified accommodation discount, transportation card, busan tour guide, etc to avoid difficulties for the visitors of Busan. If FISM 2018 is hosted by Busan, this card will be distributed free of charge to all registered participants. This card can be charged at convenience stores(7 Eleven) and subway stations.

(Except for the on-site registration)



# COMPETITION

*At FISM 2018*

---

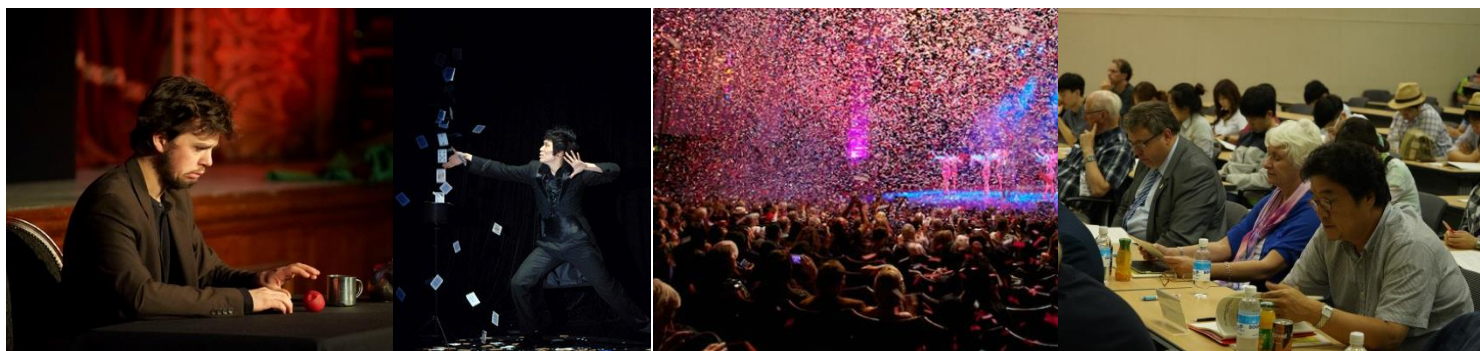


1. The organizing team of the 2018 FISM realizes that the stage and close-up competitions are the core events of any FISM. Therefore, we will make sure to keep the event as it was before in order to have a successful FISM. For the last 9 years, we have experienced successful stage and close-up competitions, Each of these competitions had more than 150 competitors and drew upon the expertise of many experts in order to bring about their success. The crews we use are made up of all veterans who have worked on international events such as the Busan International Film Festival, the International Fireworks Festival and so on. We will also plan to invite a stage manager and crew who have previous experience with the hosting of a FISM.

2. The executive committee of the 2018 FISM will observe all the rules, precede the competition by consulting with the FISM presidential group, and do what it takes so that all participants can perform their magic acts without fear or favoritism.

3. The time schedule for the competition will be derived from the ones used at FISM WCM 2006 through 2009. These schedules will be carefully examined and improved so as to ensure the smooth running of the competitions.

# Various Program



<p>Stage Competition</p>	<p>About 100 participants, who will have passed each of the continental preliminary stages, will be competing in the stage competition, at the auditorium which is well equipped to meet the needs of the most complex acts. The auditorium will broadcast the competition via CCTV on two big screens with high quality displays and others throughout the complex in order that all attendees of the convention will have the opportunity to watch the competition.</p>
<p>Close-up Competition</p>	<p>The Close Up Competition will be held in the exhibition hall 1, with some 2000 seats and the most advanced equipment. All 50 participants, who will have passed each of the continental preliminary stages. "will participate" and the competition will be relayed to the screens inside the building.</p>
<p>Gala shows</p>	<p>Apart from the competitions, there will be 2 stage GALA shows and one Close-up GALA show. A reserved-seat ticket policy will be used for the seating arrangement. The GALA show will have performances of world-class level magic acts.</p>
<p>Opening Ceremony</p>	<p>Most famous magicians in the world, will perform the biggest magic show the theme of which will focus on peace. It will be running at Busan Asiad main stadium. It will be the biggest magic show that you have ever seen!</p>
<p>Social Banquet Show</p>	<p>At the banquet show, various Korean dishes and all sorts of delicacies from around the world will be served. Also, the world's best Korean music, acrobatic performances and music by artists from around the world will perform.</p>
<p>Closing Ceremony</p>	<p>Along with the final contests, performances, and the awards ceremony, a special MC performance will be offered.</p>
<p>Magic Salon</p>	<p>This gives a great opportunity to enjoy the time to have drinks with the world's best Close-up magicians.</p>
<p>Public Show</p>	<p>The night GALA show for the general public, which has been held every year at the Magic Festival, will be hosted at one of the many other fine theaters near the Convention complex. This show will be supported by the city of Busan. This show will be held for the children and residents of Busan.</p>
<p>Dealer Booths</p>	<p>There is enough room for over 150 dealer booths, but any dealer who have previously sold illegal copies of goods will not be accepted as a dealer. The rules for accepting or refusing dealers are operated in accordance with the regulations of FISM. Numerous advantages will be offered to the dealers and participants. Refer to the attachments.</p>
<p>Dealers Show</p>	<p>The Dealers shows will take place within the dealer booth area.</p>
<p>Lectures and Workshops</p>	<p>The world's best magicians and artists will host numerous lectures, workshops, and also a symposium on various topics about magic in modern times.</p>



# Summery

## *Cheap Prices*

Contents	Euro	USD	KRW
Registration at convention 06. Jul. 2015 ~ 11. Jul. 2015(RIMINI)	450	470	540,000
Registration up to 31. Jan. 2016	470	490	560,000
Registration up to 31. Jan. 2017	570	600	680,000
Registration up to 31. Jan. 2018	670	700	800,000
Registration after 31. Jan. 2018	700	730	830,000
Entrance fee for a the GALA shows only (4 gala show + 1 Social Banquet show)	200	210	240,000
Average price of a first-class hotel 1 night (2 persons)	250	260	300,000
Average price of a second-class hotel 1 night (2 persons)	170	180	200,000
Average price of a business hotel 1 night (2 persons)	85	90	100,000
Average price of a inexpensive hotel 1 night (2 person)	50	55	60,000
Average price of transportation (From hotel to BEXCO) Subway – 1 Time	1	1	1,200
Average price of Taxi (From hotel to BEXCO) – 1Time	3	4	4,000

\* Prices in 2015

\* We are sponsored by the Government, Busan city, Ministry of Culture, the Ministry of Sports and Tourism. So we can offer a discount on registration and hotel fees, And we can also arrange the flight to Busan, Korea.

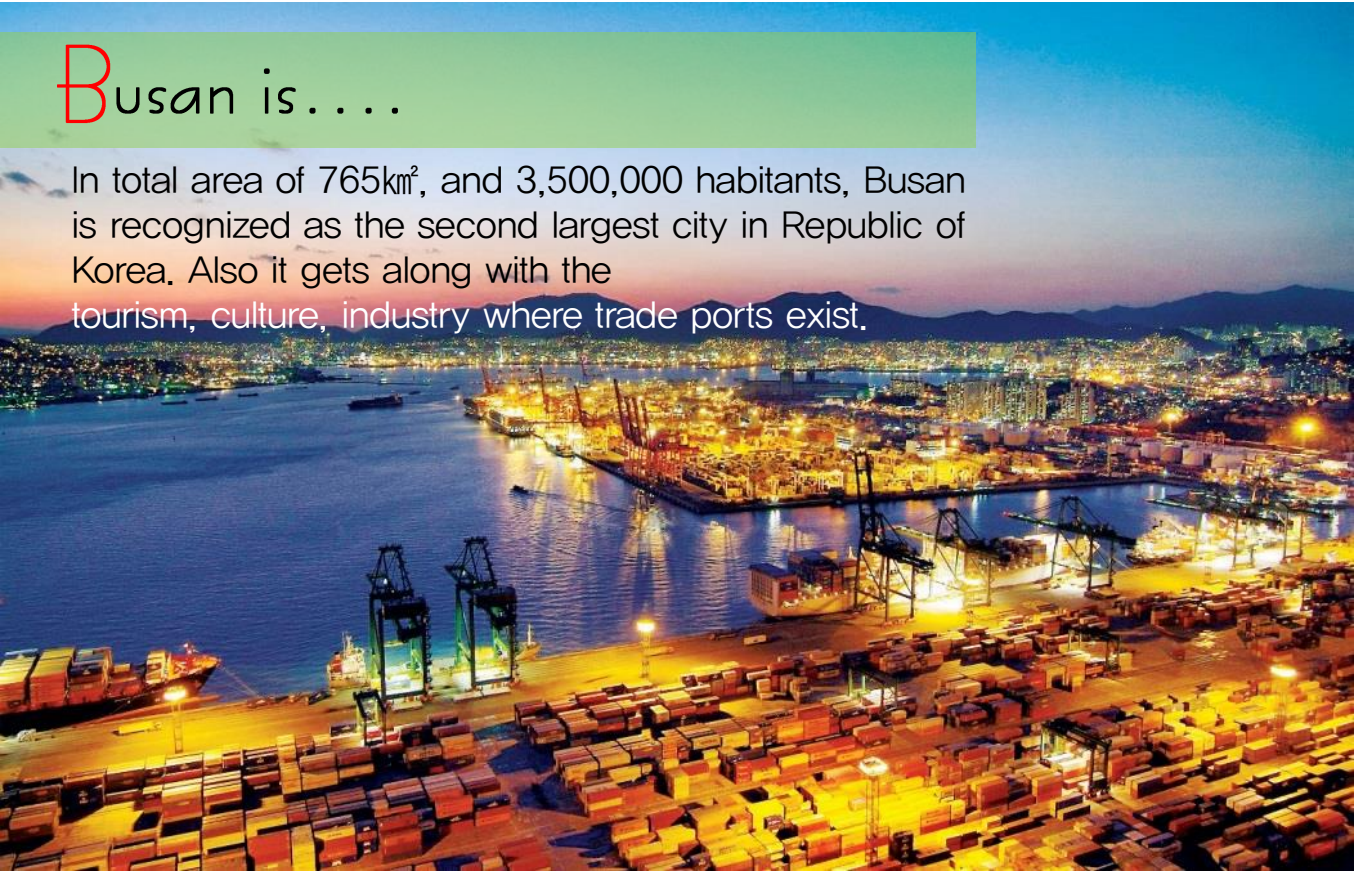
BUSAN

---



## Busan is....

In total area of 765km<sup>2</sup>, and 3,500,000 habitants, Busan is recognized as the second largest city in Republic of Korea. Also it gets along with the tourism, culture, industry where trade ports exist.



## A CITY *with it all*

While the Haeundae Beach area of Busan, with its beaches, mountains, temples, shopping malls, hotels, and convention facilities often gets most of the world's attention, Busan is home to more than just one city center. Be it the expansive shopping district of Nampo-dong, home to the massive Jagalchi seafood market; Seomyeon, with its countless shops to please the most discriminating fashionista; or Dongnae, the ancient city-center with its long history, mountain temples, fortresses, and hot springs, there is something for everyone. And all are easily accessible via a short trip on the city's convenient public transportation system.





## The Perfect Place for Your Special Event

---

The charm of Busan goes beyond beautiful beaches, a stunning skyline, incredible food, natural scenery, world-class infrastructure, and endless shopping. Visitors who have walked her maze of city streets, hiked the myriad mountain trails, or relaxed on her sandy shores will all agree that what sets Busan apart is the charming mixture of the old and the new.

*Busan exemplifies how  
natural beauty and  
modern life can coexist in  
perfect harmony*



# Busan's MICE Resources

*Convenient, connected,  
comprehensive*

---



From serene, thousand-year-old temple sites to the tallest residential skyscrapers in Asia, Busan fuses the elements of what the world once was in centuries past and where it's headed in the near and distant future. From vast outdoor markets to expansive indoor shopping centers, Busan offers it all as a convenient, centrally-located hub for Northeast Asia. As a metropolis of MICE industry in Korea, Busan had successfully hosted large international conferences such as 2014 ITU Plenipotentiary Conference, one-ASEAN summit, APEC summit, etc. In 2002 it was a host city of Korea-Japan world cup, and the Asian game. As such, it is an internationally known city.



# Event Reference

## BEXCO

Also, 'Busan International Film Festival' which is one of the world's top 5 film festivals, and 'G-star' the world's largest game conference happens annually along with other world class exhibitions and events such as motor shows.

Bexco which is Busan's representative convention hall, has held more than a thousand events in 2013. These data have raised the name of Busan as a metropolis of MICE industry.

## Busan Cinema Center

The centerpiece of the Busan International Film Festival, Asia's largest and most acclaimed annual film gathering, the Busan Cinema Center is an architectural marvel designed by famed Viennese firm Coop Himmelb(l)au. The Cinema Center's cantilever roof is the world's largest, soaring over an outdoor plaza capable of seating 4,300 people. The exterior boasts 42,600 LED lights synchronized to create magnificent visual displays, all right in the heart of Busan's conference district.

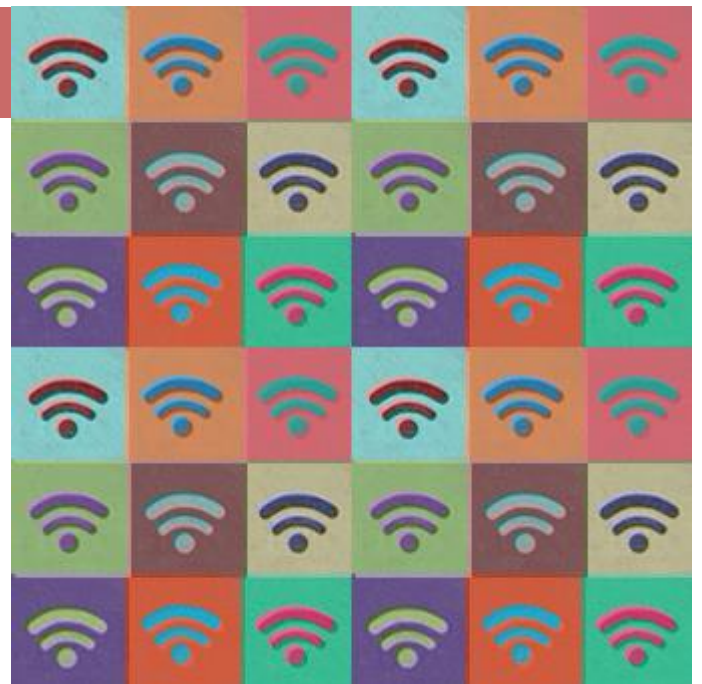


# WI-FI



*If you need free Wi-Fi*

By offering free Wi-Fi access in all 2,500 city buses, five subway lines, major transportation hubs, tourist destinations, and convention center, Busan has become one of the world's top locations for staying connected 24-hours a day, 365 days a year.



Transportation



# In-Cheon

## *International Airport*



Incheon International Airport is used by more than 45 million passengers annually. 1.9 million tons of cargos are being transported by 170 thousand times of flights. As a global hub, it is well established and the route linking Europe and South Korea is well organized. 9 years in a row, its service was selected as the world's No. 1, as well as the international freight as third.

For these reasons, it is trusted airport worldwide. In 2020, 5 runways, 100 million passengers, 10 million tons of freight and 74 flights are expected to be added



# Busan

## International Airport



## Gimhae International Airport,

which is an air transport hub of Busan, is an important transportation hub used by more than 4.5 million passengers annually. It transports 3.5 million tons of cargos by 150 thousand flights. It is located approximately 20 minutes away from Busan, connected to the subway which you can conveniently use. Regularly running airport limousine will help you to travel much easily.



# Airport limousine

# Shuttle bus



First bus – 07:10  
Last bus – 21:40

Interval – 25 minutes

Price – 7 USD  
7 EURO  
7,000 KRW

- |                             |                              |
|-----------------------------|------------------------------|
| 1 Kim-hae airport           | 11 Han-hwa resort            |
| 2 Centum hotel              | 12 Hyundai I-park            |
| 3 BEXCO (convention center) | 13 Gyung-nam apartment       |
| 4 Yang-wun high school      | 14 BEXCO (convention center) |
| 5 Dae-dong downtown         | 15 Centum hotel              |
| 6 Dong-bu apartment         | 16 Namcheon sea market       |
| 7 Haeundae hospital         | 17 Kim-hae airport           |
| 8 Jang-san station          |                              |
| 9 Novotel ambassador        |                              |
| 10 Paradise hotel           |                              |



# Train

## *KTX (Fastest Train in Korea)*



By linking Seoul–Busan(400KM) in 2 hours and 30 minutes, KTX is generally used by travelers. Its speed and accuracy is known as 'a plane on the ground' . A top speed of 305KM (190Mph), is a representative for the high–speed rail of Korea combining convenience and reliability.

It is available from Incheon International Airport. You can use it at an affordable price of about €30 and it takes a short period of time. It is also directly connected to all city stops, which provides the best comfort to the customers while travelling.

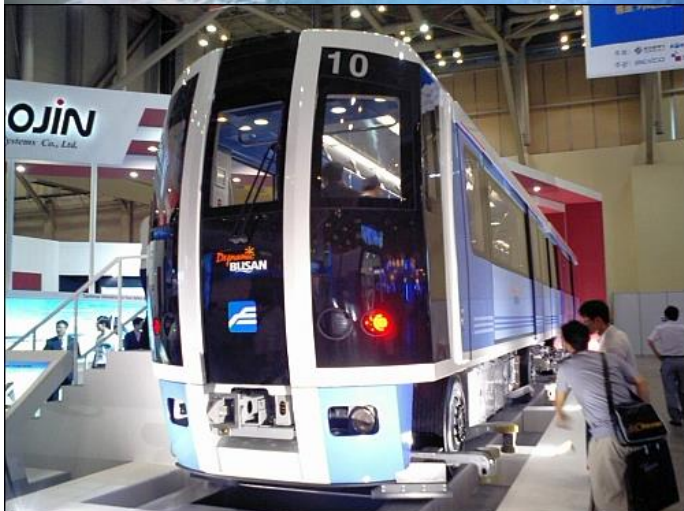


# Subway

*Convenient & Cheap*



5 Minute



The subway is the best transportation of Busan. Connecting all places in Busan such as downtown, tour spot, airport, etc, “Metro” will quickly and comfortably take you anywhere you want to go.

You can travel to haeundae, gwanganri, taejongdae, nampo dong which are famous spots, by using the metro transit system.

Since it connects from Gimhae international airport to the venue, and to your hotel, you can reach your in a single trip.

For the participants of 2018 FISM Busan, we are planning to provide an “All in one card” with the equivalent of about €10.

\* Busan Metro single boarding Fee: €1

# Taxi

---

*Convenient & Cheap*



Taxis are used widely in Busan. They are cheap, quick and safe. They are in lines waiting for you in places such as the airport, train station, subway station, etc. A taxi in Busan has a neat interior, and gives you a comfortable ride with the best service.

## From hotel to BEXCO

distance – 4KM

Average time – 4 minutes

Price – 4 \$





# Shuttle Bus

## BIMF Shuttle



During FISM 2018, There will be run to every hotel the organizers have an engagement with.

Shuttle buses will be operated between the hotels and Bexco following a regularly schedule.

On the first day of the event, magicians will be taken to the opening in asiad main stadium by special busses.

Accommodation



# Guest House

## *For Young People*



Affordable price of €20~€40.

Well suited for families, friends or accompanying visitors. Rooms for 2~ 6 persons are available with the breakfast provided.

It is located 5~7KM away from the venue, (5 minutes on foot to the subway). A taxi costs about €4.

It is also near to a subway station, bus station, and an excellent call taxi service will keep you relaxed while traveling.

An average number of 50 persons can be accommodated.

# Guest House

## *Facility*



Breakfast Buffet, computer rooms, showers, laundry, etc are provided. The guest house is surrounded by 24-hour convenient stores and restaurants. It is close to the downtown area offering the best value for money.



# Motel

## Facility & Service



Accommodations are about €50~€70 which is an affordable price for a hotel in this neighborhood, considering that breakfast is included. You can stay even comfortably nearby Heaundae. (€100–€200 in Europe)

It is located 5KM away from the venue, 5 minutes on foot. A taxi costing about €4.

It is nearby a subway station, bus station, and an excellent call taxi service is available.

The average number of rooms is 50

# Hotels

## *First Class*



Visitors can also stay at the first-class hotels in Haeundae with the best facilities and services including Buffet, spa, fitness centre, café, lobby, pool, karaoke, etc. Neat rooms with friendly service will be provided. You can also enjoy a beautiful ocean-view in every hotel. Free Wi-fi is free.



# Hotels



# Grand Hotel

651-2 Woo-dong, Haeundae-gu,  
Busan, Korea

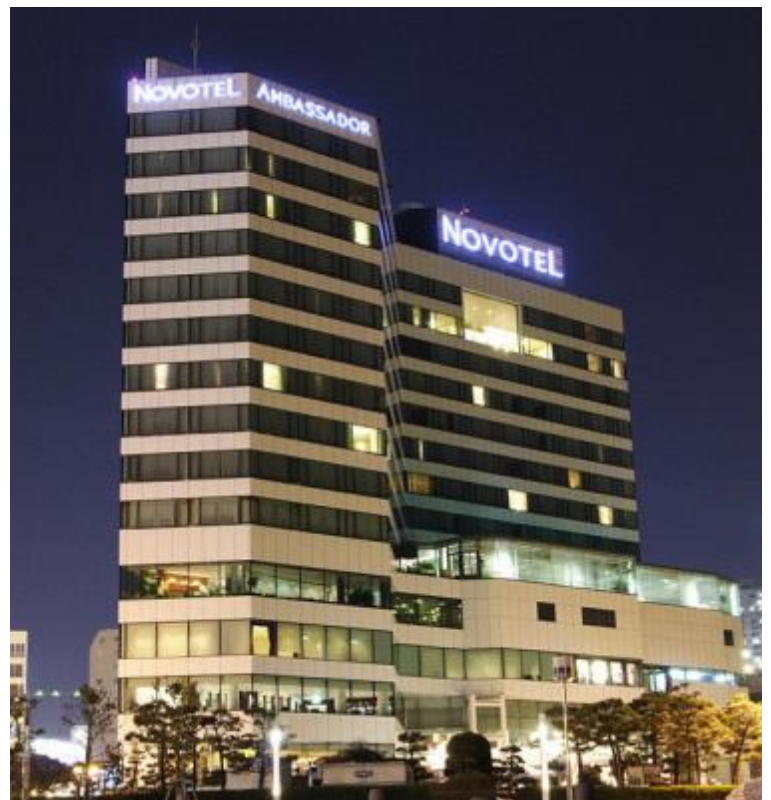
# Seacloud Hotel

1392-100, Jung-dong, Haeundae-gu,  
Busan, Korea

# Novotel

# Ambassador

1405-16, Jung-dong, Haeundae-gu,  
Busan, Korea







# Centum Hotel



## *The Best Optimized Hotel For FISM*

Haeundae Centum hotel is located a minute away from BEXCO with an easy access. The best service and amenities will provide you comfort during the stay. A shopping centre is nearby and various facilities such as spa, restaurant, wedding hall, bar, fitness, massage shops, lounge, meeting rooms, etc are there for you to enjoy Busan. Every room has a large size closet that can accommodate various clothes for guests from abroad.

**Price in May 2015 (1 night)**

230 EURO / 250 USD / 270,000KRW

VENUE

---



# Venue

## Opening Ceremony



# **Busan Asiad Main Stadium**

Busan Asiad Main Stadium will be used as the site for the opening ceremony of FISM 2018.

It is the most appropriate multipurpose stadium for various performances, sports events, and cultural events. The facility includes waiting room, fitting room, infirmary, press relations and relay broadcasting facilities, headquarters, etc. In consideration of foreign tourists, the seats are manufactured in the a width of 450mm.

55,000 seats are installed in total, and 5000 auxiliary seats are available to install on the turf where the arena will be. Equipped with the best conditions, it will be the place where the best opening ceremony ever in FISM will be held.



# Venue

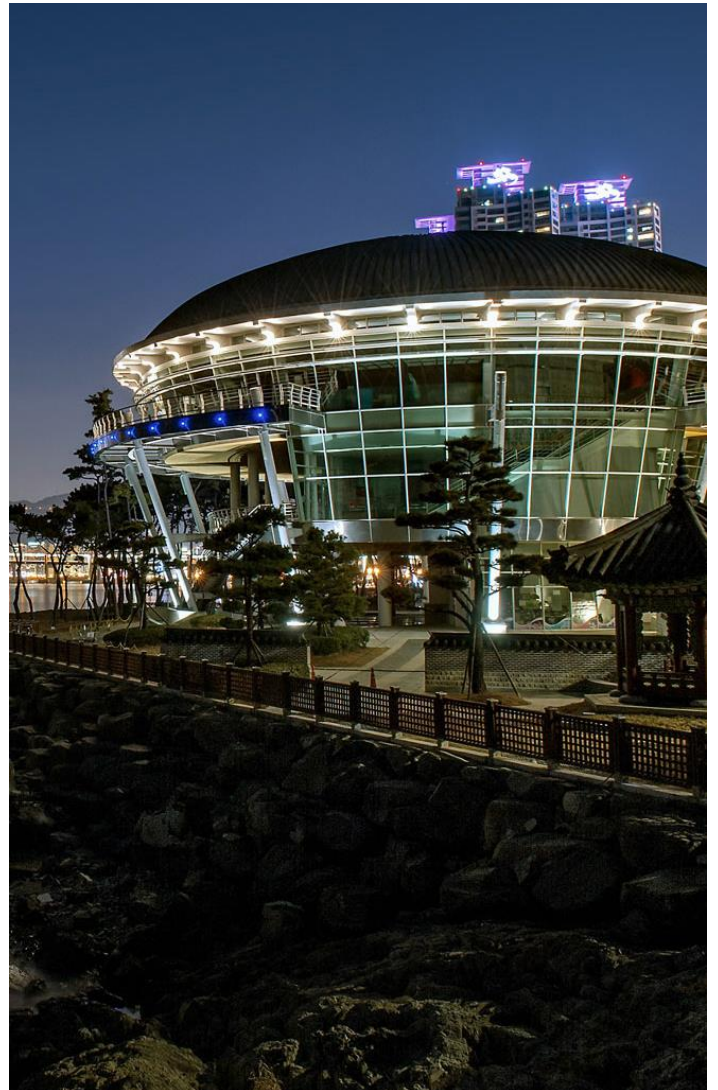
---

## Main Event



The venue of the FISM2018 Busan, BEXCO, stands out as the city's premier venue since it first opened in the heart of Busan's convention district in 2001. It is the best place for the MICE industry (Meeting, Incentive trip, Convention, Exhibition & Event) where lots of international meetings, conferences, exhibitions, concerts, etc. can be held. International big events such as Busan International Motor show, G-star, etc. are hosted in Bexco.

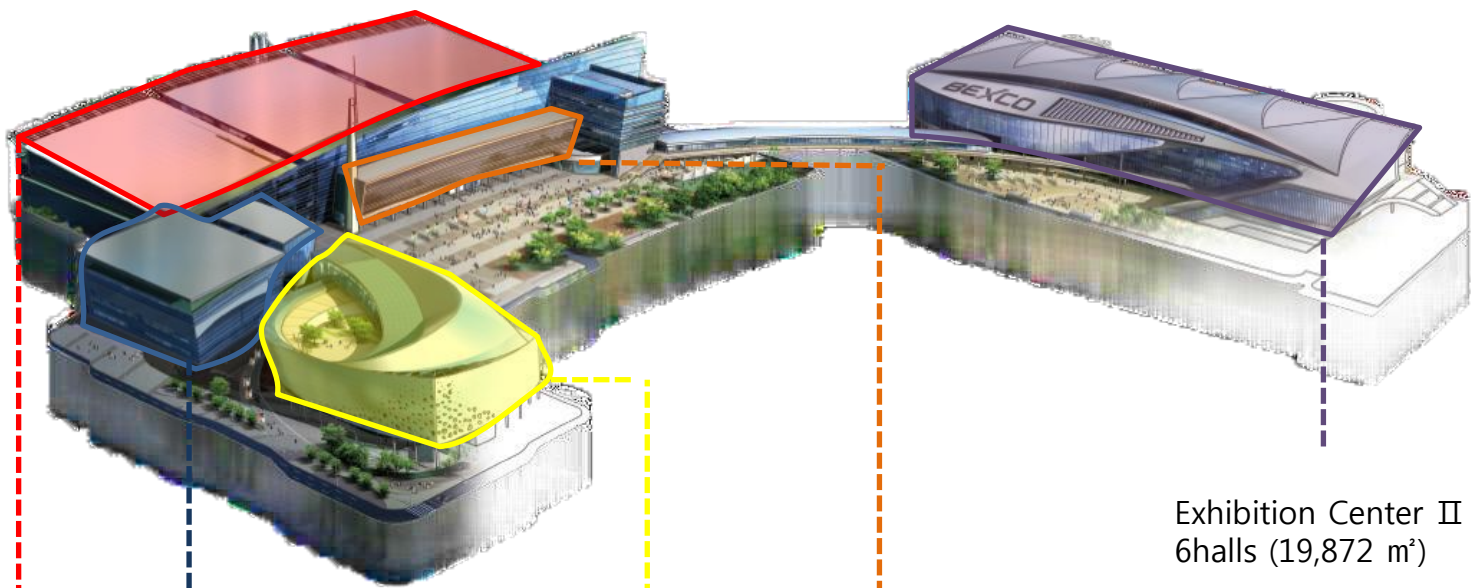
With over 90,000 square meters on seven floors and one underground level, BEXCO's sophisticated exhibition and convention facilities, spacious halls, and 22 conference rooms could house five soccer fields. 2012 saw the opening of a new exhibition wing and a 4,000-seat auditorium. If FISM 2018 is hosted by Busan, the city will provide the suitable, and the best place for any kinds of performances.





# Convention Center (For Main Event)

# BEXCO



Convention Hall  
24 Meeting Rooms  
(5,442 m<sup>2</sup>)

Auditorium  
Max 4,002 seats

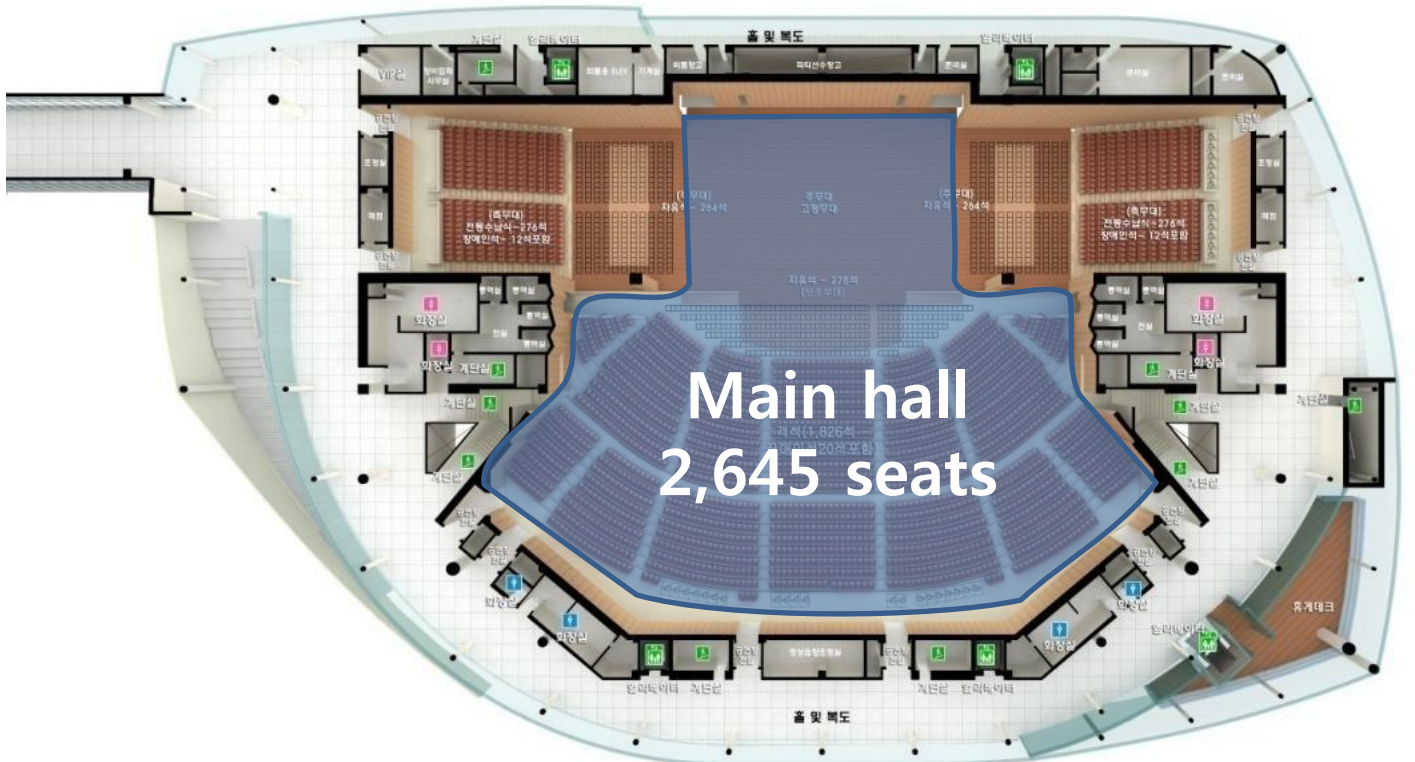
15 Meeting Rooms  
(1,877 m<sup>2</sup>)

Exhibition Center II  
6halls (19,872 m<sup>2</sup>)

Exhibition Center I  
5halls (26,508 m<sup>2</sup>)

Auditorium  
Main stage

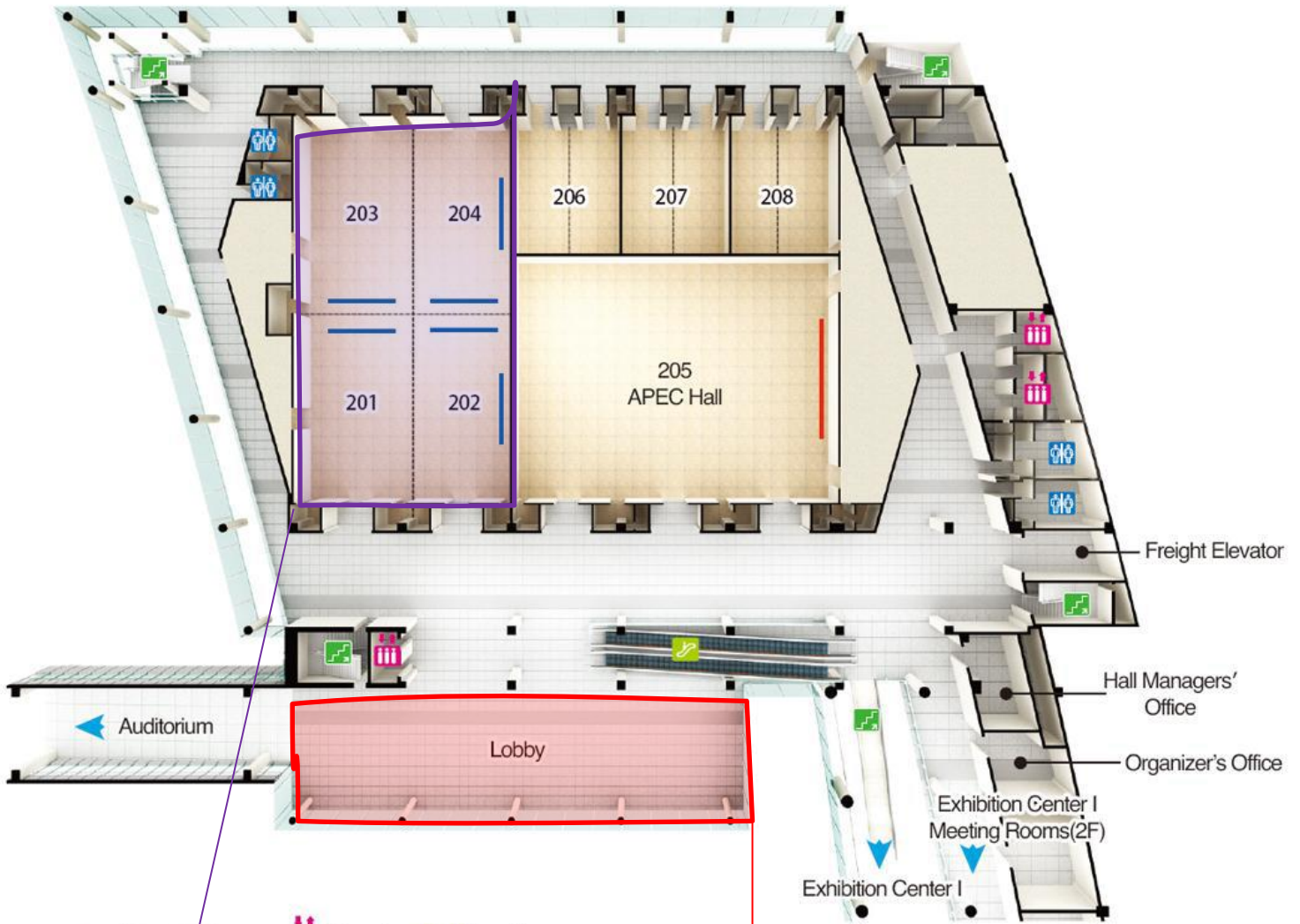
Magic Gala show  
Stage Comprtition





Convention hall 2F

Magic Lecture  
Judge's meeting  
Registration

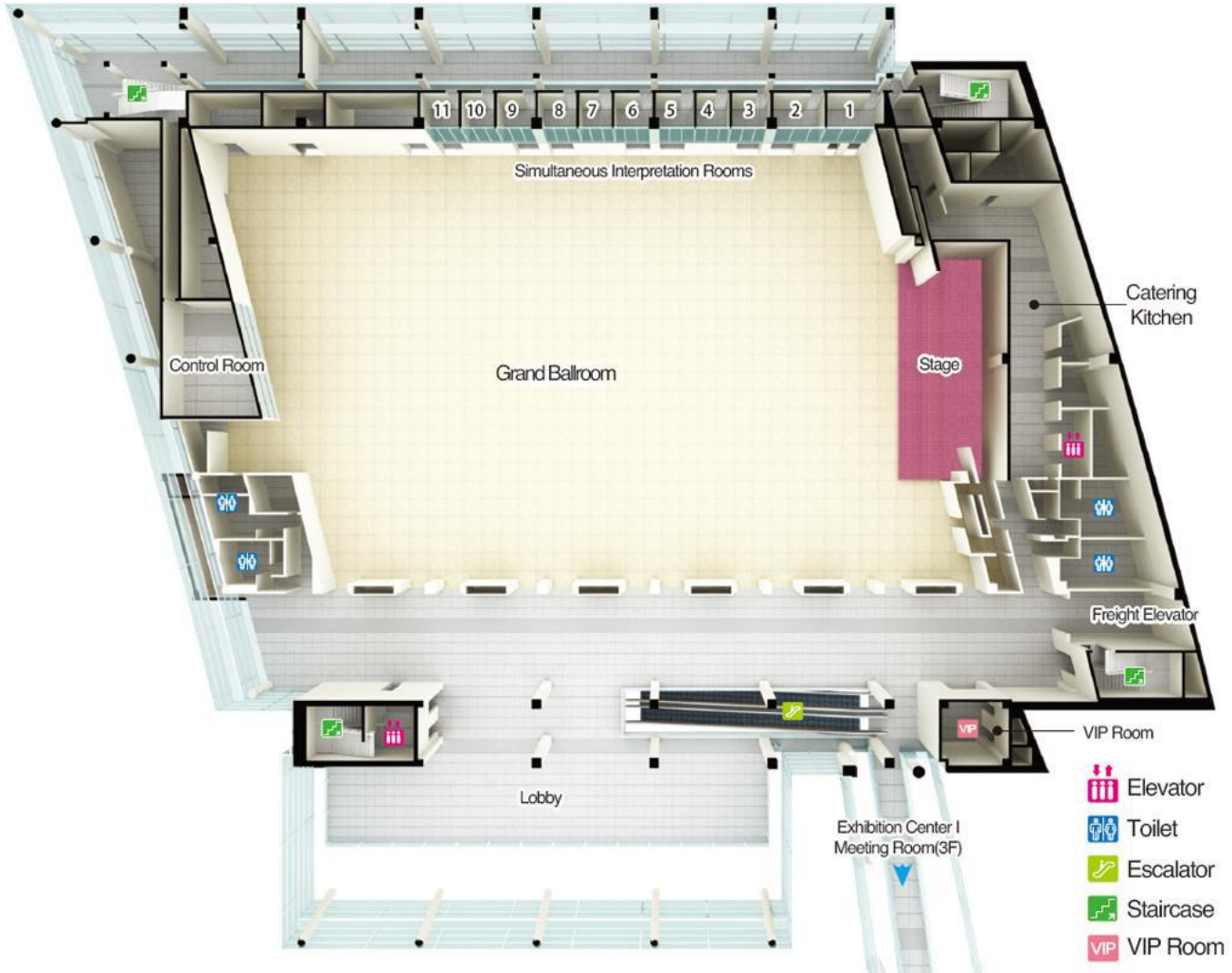


Lecture, (201, 202, 203, 204)  
Judge's meeting (208)

Registration desk (2F lobby)

# Convention hall 3F Grand Ballroom

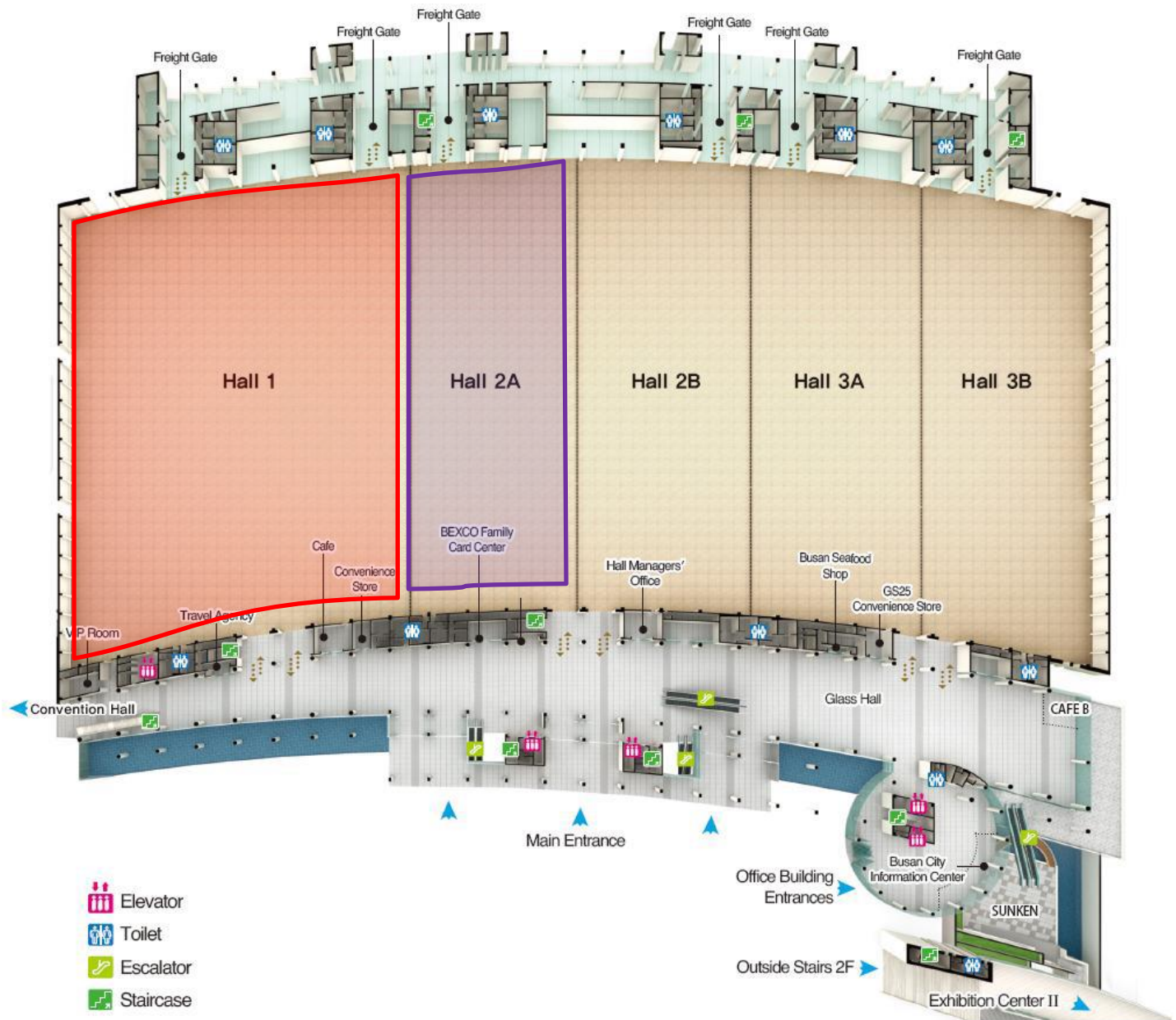
# Dealer Booth Dealer show





**Exhibition hall 1  
(Hall 1,2)**

**Close-up Competition  
Special banquet (1 night)**

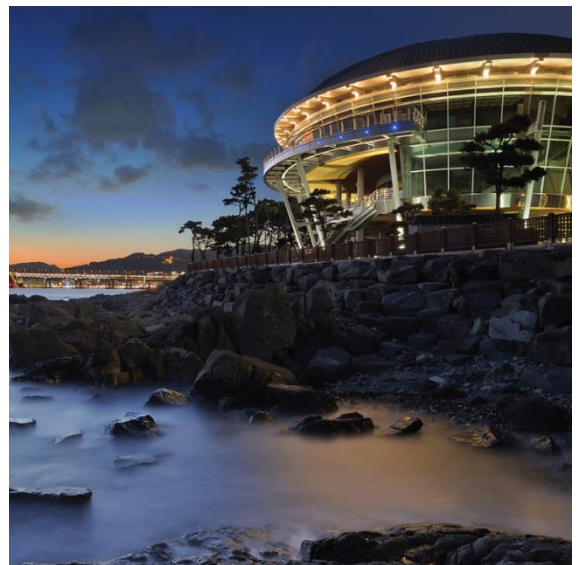
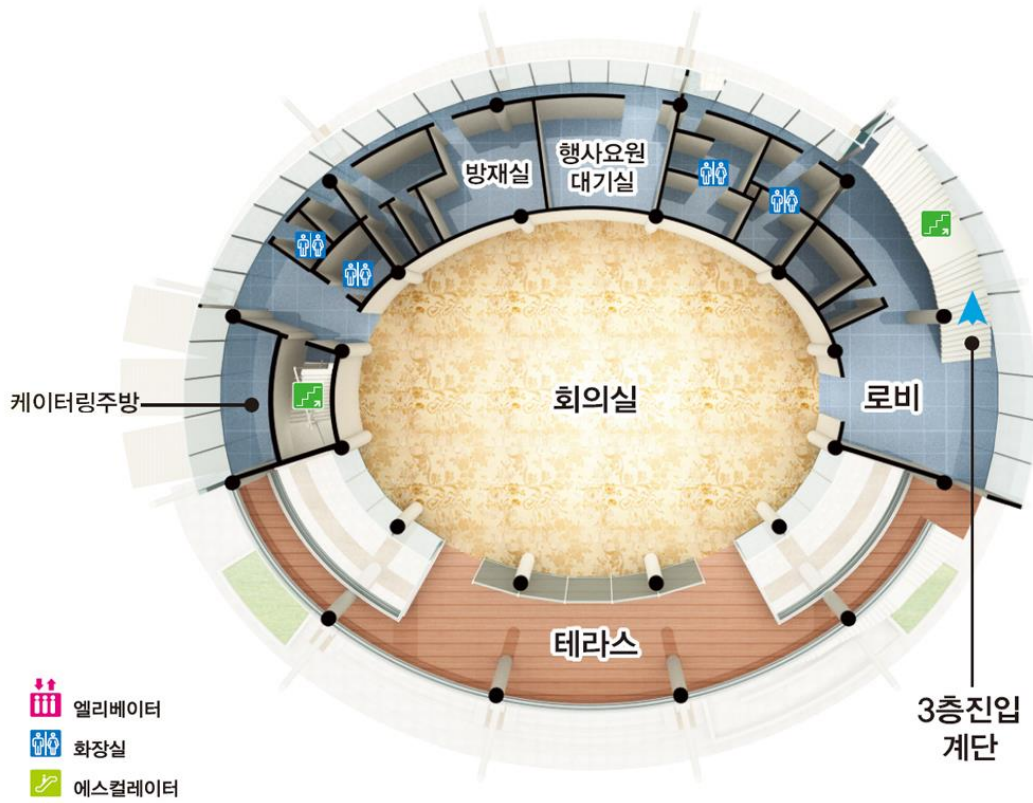


Hall	Size	Booths	Theatre	Class	Reception
1	8,836	430	6,000	2,500	2,000
2,3	4,418	210	3,000	1,250	1,000

\* Whole Exhibition hall can be separated

Nurimaru  
APEC House

# FISM General Assembly





TOUR

---

# Beach



Gwangsan bridge is also known as a diamond bride which is the largest sea bridge in Korea. It has the most beautiful night view and of course, the world class bone fire festival.

Haeundae beach is Busan's representative tour spot where more than 300 thousand foreigners come and go. It has a beautiful landscape where everyone meets in summer.



# Centum city

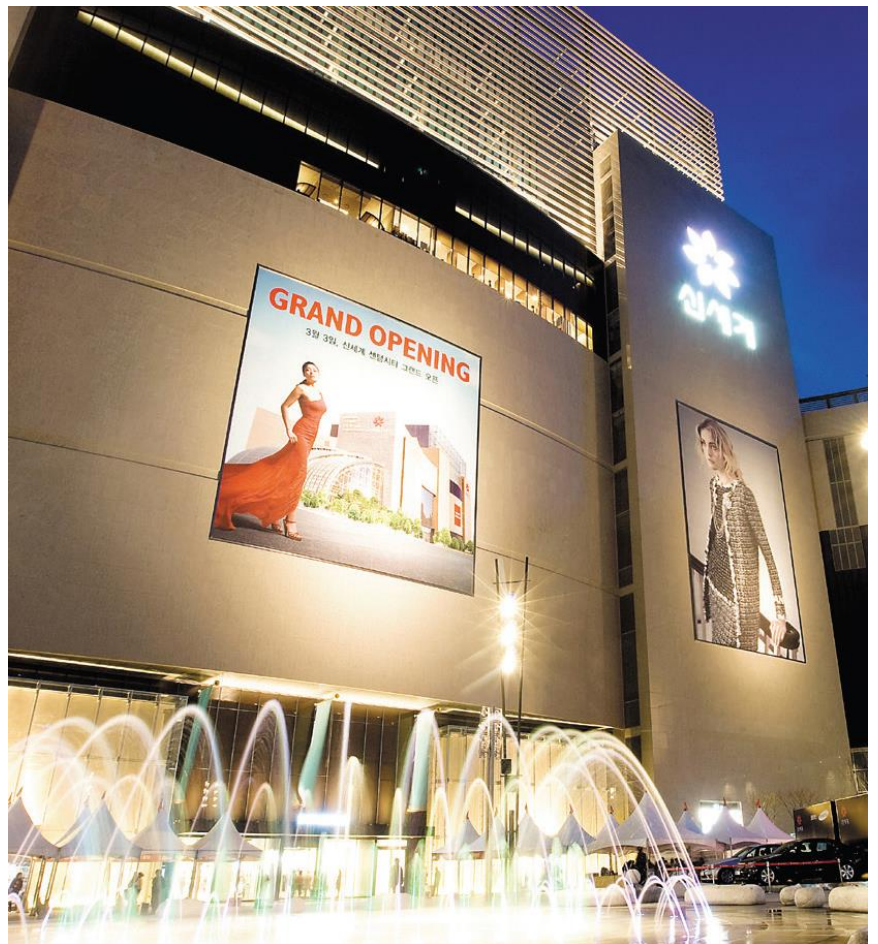
Busan Cinema Center is the world's first multi-cultural space where film and performing art are combined. The facility includes 3 theatres and Korea's top level of performance stage. The scale of 2.5 times a soccer field, containing the world's largest roof-big roof, small roof, and more than 4 trillion LEDs, produce a fantastic scenery with the surroundings

Since its establishment, Busan International Film Festival is held here.



## *Cinema Center, Shinsegae Department Store, BEXCO*

Shinsegae Department Store is listed in the Guinness book of records as the world's largest store. As a multi-cultural space, it is not just a shopping mall. It offers a variety of service, such as shopping, culture, food, events, theatres, etc.





# Nampo-dong



부산원도심  
근대역사  
골목투어

동백꽃을 단 스토리텔러 이야기 할매·할매가  
원도심 근대역사 골목투어를 안내해 드립니다.

부산을 속속들이 느껴보고 싶다면, 부산의 숨겨진 이야기를 만나고 싶다면  
동백꽃을 단 이야기 할매 할매의 이야기를 들어보세요.  
부산을 한층 더 사랑하게 될 것입니다.

↓

[골목투어 시작하기](#)

You can see the past and the present of an original downtown by taking a modern history alley tour which is based on 4 themes. From the beginning until the end of this program, explanation will be provided by grandpa and grandma's story', so you can easily understand and enjoy it. Foods, sights, shopping are linked to show the real Busan.

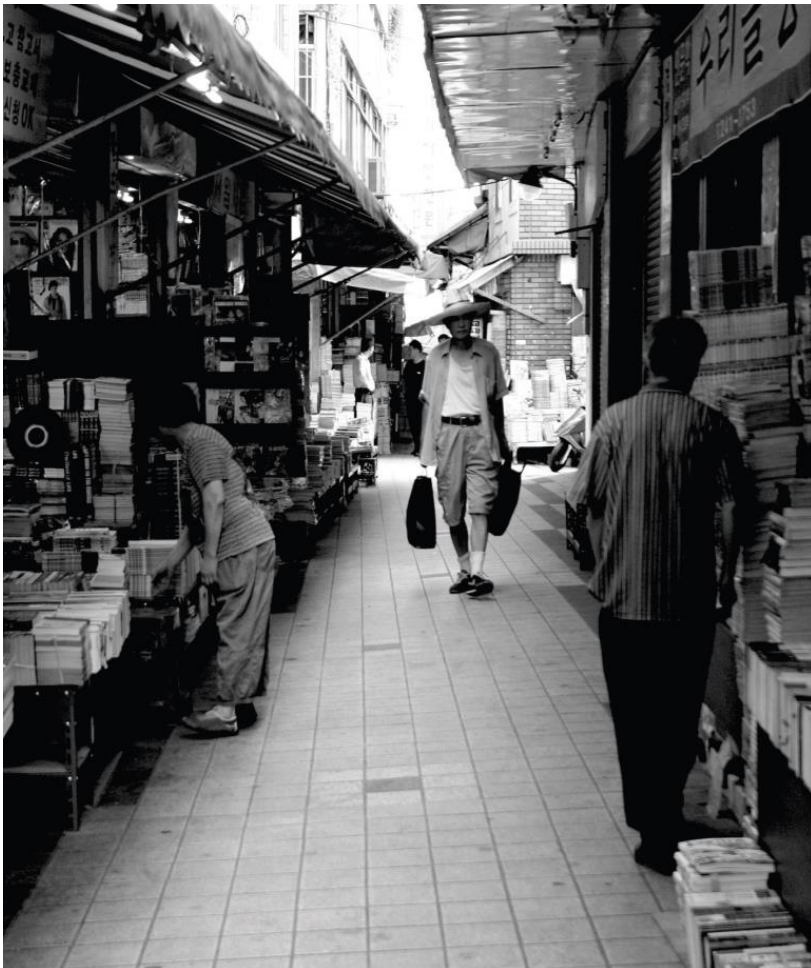
Gamcheon cultural village is also known as Busan's Machu Picchu. Every year it runs a tour program with different themes based on its culture and arts. You can see another history and culture of Busan.



# Nampo-dong



BIFF Square shows you can see the history of Busan International Film Festival which is now one of the world's top 5 film festivals



## *Busan International Market*

Busan international Market in Nampo- has conserved korean traditions and history. It is also used as a background by the movie 'International market'

# UN Museum



## UN Memorial Park

The world's one and only UN Peace Memorial Park:  
To honor the UN Korean war veterans. It is a place where you can feel the spirit of sacrifice. The facility includes a history of the Korean war, a UN Peace memorial museum, a UN war memorial, international Peace memorial, 3 exhibition halls and a 4D consulates, convention hall, etc.





# Cruise

## PANSTAR CRUISE

Official cruise running Busan–Osaka

You can enjoy a fantastic night view of the coast.

Various tour events are offered. Rates are priced from €100–250, but for the participants, 50% of the tour cost will be supported in consultation with the organizations. Reservation for FISM will have to be booked in advance. It will run for two days after the convention.



# BUSAN City TOUR

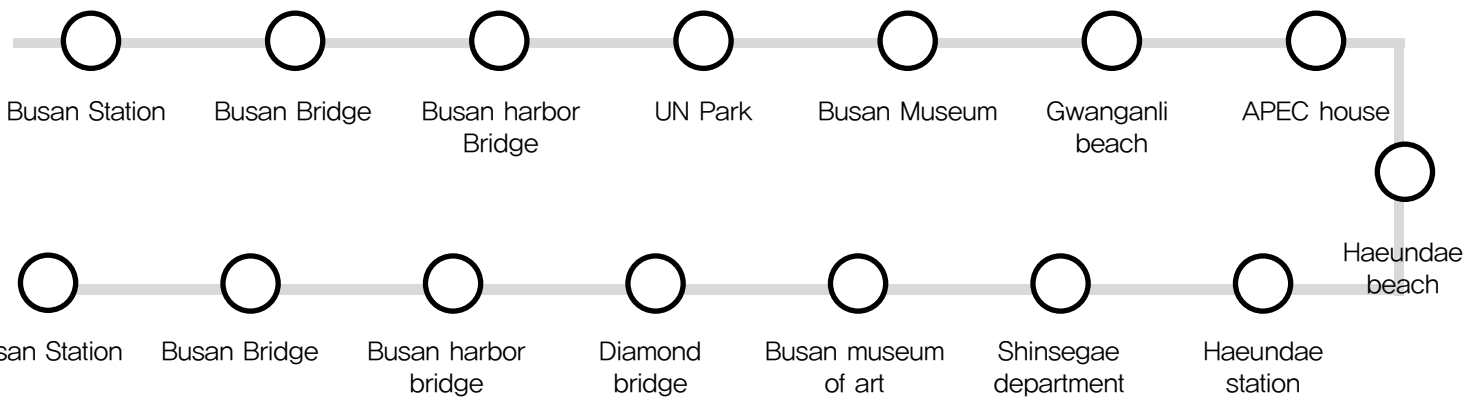


From the downtown area of Busan to the historical sites, you can travel by bus.  
 It is the number 1 tour program in Busan: with only a single ticket,  
 you can travel anywhere you want.

Although the tour has organized bus routes, there are hourly busses that you can take  
 regardless of time.

Adult	Child
12.5 EURO	6.5 EURO
13.5 USD	7 USD
15,000 KRW	8,000 KRW

### Direction for Haeundae



### Direction for Taejongdae

